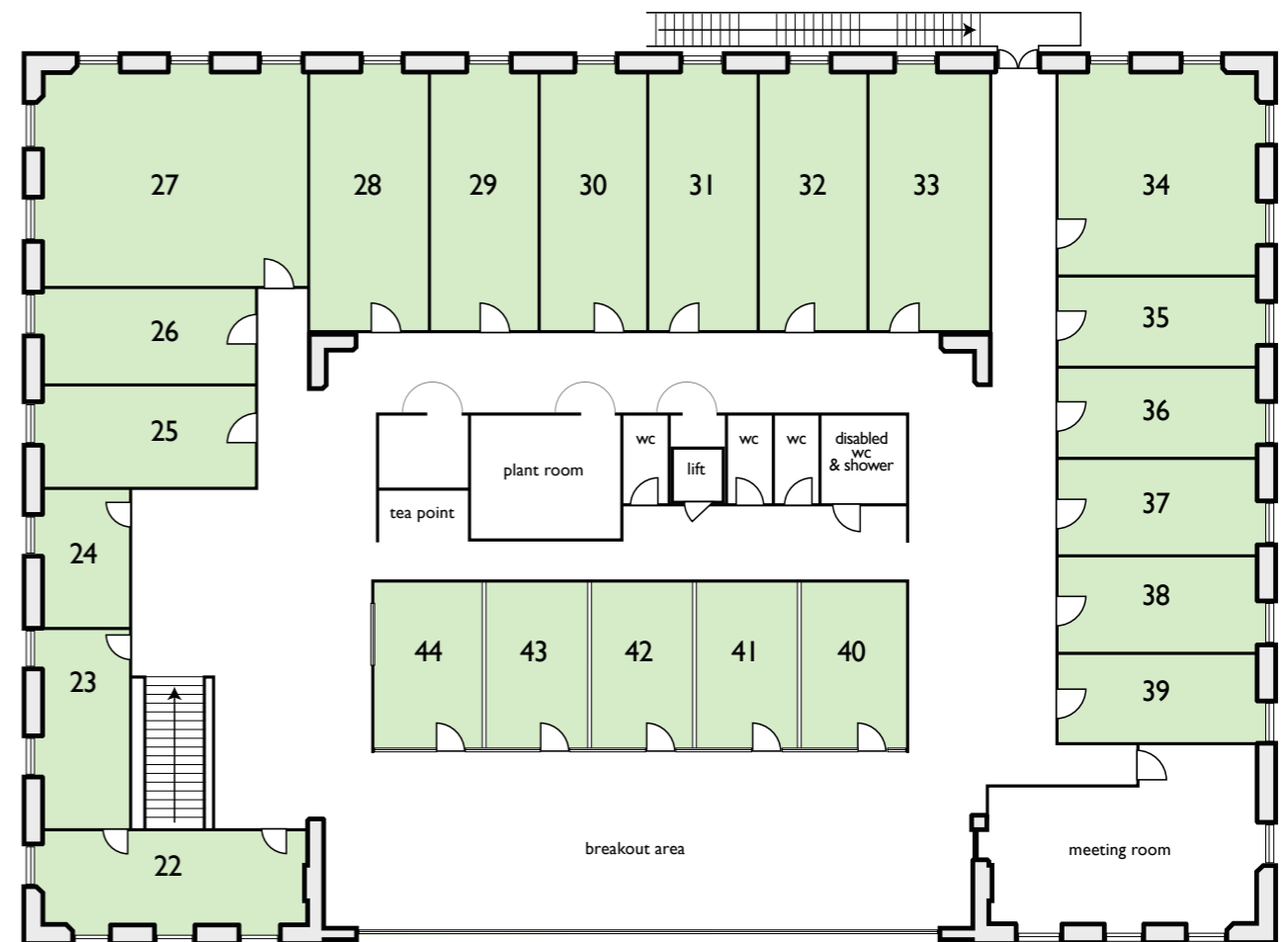


ground floor



first floor

Unit No.	Area m <sup>2</sup>	Area f <sup>2</sup>
1-5	133.7	1439
6	28.6	308
7	24.7	266
8	24.7	266
9	24.9	268
10	24.8	267
11	23.0	247
12	15.0	161
13	17.2	185
14	17.7	190

Unit No.	Area m <sup>2</sup>	Area f <sup>2</sup>
15	15.9	171
16	15.8	170
17	17.2	185
18	43.0	463
19	27.0	290
20	23.4	252
21	27.0	291
22	22.7	244
23	15.6	168
24	10.9	117

Unit No.	Area m <sup>2</sup>	Area f <sup>2</sup>
25	19.5	210
26	18.1	195
27	51.6	555
28	27.7	298
29	25.2	271
30	25.1	270
31	25.1	270
32	25.1	270
33	28.0	301
34	36.7	395

Unit No.	Area m <sup>2</sup>	Area f <sup>2</sup>
35	15.9	171
36	15.9	171
37	16.9	182
38	16.9	182
39	15.5	167
40	15.4	166
41	15.1	162
42	15.1	162
43	15.1	162
44	15.4	166